

垂直住房开发，关于控制巴厘岛建筑高度的地区法规

Ni Luh Putu Dessy Dharmayanty, Syamsul Alam Paturusi, Ngakan Ketut Acwin Dwijendra, Ni Ketut Agusinta Dewi
 乌达亚纳大学工程学院 印度尼西亚巴厘岛登巴萨 80361

摘要:

1974

2011

关键词:

Vertical housing development, on control regional Bali regulation of building height

Ni Luh Putu Dessy Dharmayanty, Syamsul Alam Paturusi, Ngakan Ketut Acwin Dwijendra, Ni Ketut Agusinta Dewi
 Faculty of Engineering, Udayana University, Denpasar, Bali 80361, Indonesia

Abstract: Regional Regulation of the Province of Bali concerning the height of buildings has been known since 1974 until now. The development of tourism has an impact on the high price of land in Bali especially in urban areas and tourist accommodation. The increase in the number of urban residents and the high number of shortages of decent housing, opens a discourse on Vertical Housing development, through the National program that has been started since 2011. The development of Vertical Housing in Bali has not been responded to optimally by both the Regional Government and the Community. However, the need for housing and various other factors are increasing and unresolved with existing programs, therefore or unwillingly or dislike of the people of Bali must prepare themselves to be able to receive Vertical Housing development in the Urban area. Then how is this Regulatory Control related to the program? Then how far is the effect? Through this research, this will be traced qualitatively.

Keywords: proper residential needs; regional regulations; vertical housing

一、引言

2015

27000

1974

7500

8500

2 3 4

1974

4

/

2005

5

20.31%

15

二、文献综述

RTRWP RTRWK

RDTRK

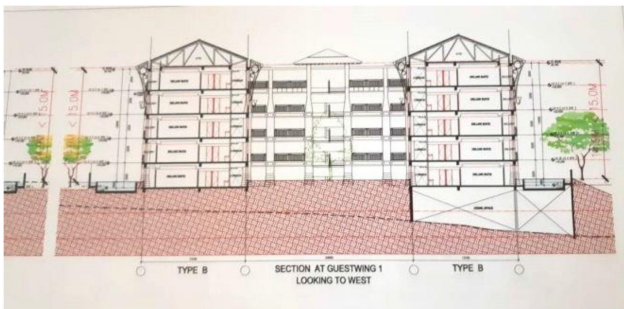
RTBL

29/PRT/M/2006

4

/ 2
 3
 7 4
 KLB
 KDB “
 KLB ” KDB “
 ”
 KLB KDB 6
 KLB KDB 7
 8
 1000
 KDB 60% Rapoport(1969)
 600 KLB
 =2.4% 2400 1 /
 2.4×1000

RTRWK 62 3
 15 30%
 2016 3 23
 2 3 15
 7 /
 1



1.

三、研究方法

四、结果和讨论

11000 8000

Siswono 2013 1

15 7

15

2

5 -12
KDB 60%
6 -15
100 3600

30-50

“ ”

$$100 \times 36 \text{ m}^2 = 3600 \text{ m}^2$$

$$40\% = 1440 \text{ m}^2$$

$$= 5040 \text{ m}^2$$

KDB60% 8400 m² 20%
672 m² 9072

2.80 5040 100 28-45
5 2 7

700 36

728 500 /m² × 25200 m² =
1260 1988 30%

578.4

五、结论

2566.4

600

2000

4.17 5

“

”

10

2

参考文献

[1] Blogspot.co.id. Study of Housing and Settlement Theory (study and learning, 01-21-2003).

[2] Barbara Ward, Human Satisfaction crisis and opportunity, University of Indonesia Faculty of Technology Library.

[3] Creswell, W John. 1977. Qualitative Inquiry and Research Design (choosing among five approaches second

1

15

edition).

[4] Dwijendra Acwin Ngakan Ketut. 2014. Improving quality and acceptability in affordable Housing Provision Project in Bali.

[5] Gde Line Set by IGN, at all. 1981. Balinese Traditional Architecture.

[6] Peters Hendrik Jan; Wardana Wisnu. 2014. Discovering the Spirit of Bali (Costumary Village as Icon of Tri Hita Karana).

[7] Government Regulation number 14 of 2016, concerning the Implementation of Housing and Settlement Areas.

[8] Bali Provincial Government, 2015, Update on Housing Database and Settlement Area in Bali Province.

[9] Regional Regulation of the Province of Bali number 13 of 2009 concerning the Spatial Planning of the Province of Bali.

[10] Regional Regulation of Badung Regency number 26 of 2013, concerning the Badung Regency Spatial Plan.

[11] Regional Regulation of Badung Regency number 3

of 2016 concerning Building Buildings.

[12] Rapoport, Amos. 1969. House Form and Culture. Engelwood Cliffs, New York. Prentice Hall Inc.

[13] Rapoport, Amos. 1977. Human Aspect of Urban Form. Oxford Pergamon Press.

[14] Sadana, S. Agus. 2014. Settlement Area Planning. and Settlement Area.

[15] Setiawan, Haryadi. B. 2010. Architecture, Environment and Behavior, introduction to methodologies and applications. Gajah Mada University Press.

[16] Siregar, Laksmi G. 2005 Phenomenology in Architecture. University of Indonesia Press.

[17] Syamsul Alam Paturusi, 2016, Segregation of social space between Migrants and Indigenous Peoples, in Urban Settlements in Denpasar, Journal of Bali Studies, Volume 06, number 02, October 2016.

[18] Republic of Indonesia Law Number 1 of 2011 concerning Housing and Settlement Areas.

[19] Law of the Republic of Indonesia number 20 of 2011 concerning Flats.