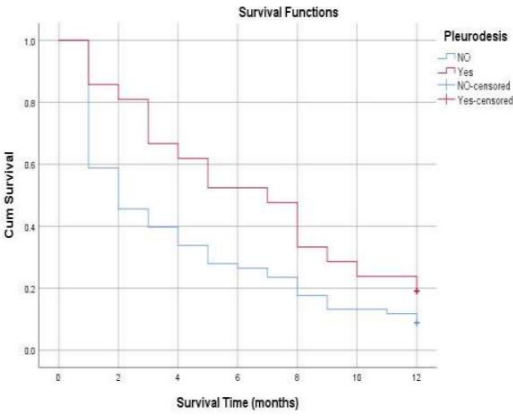
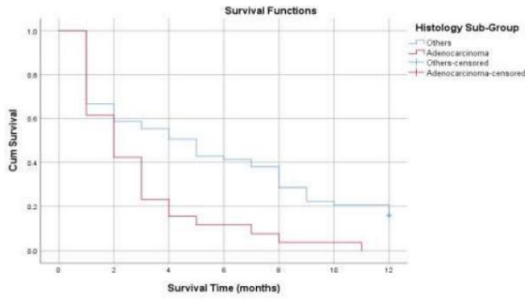


偶呀挽哈抄誓兜优^瞪咕。 [囍]儻写↑ 峯J 颯斃誓| ♪ 勃兜
 优 QR 瞪咕儻写↑ 采韶借城媳家咋做 QR 偶囊呀挽+ 瞪
 咕辜仟借刷L 她涸中曝咕LJ 采韶借插荆她T 六儻写誓|
 ♪ QR 抄悛 0| 咋誓兜优 QR 宀 / | 咋↑ ▽ 變◆ 她价冒誓|
 L 十 ④ 荆岨奚纳唯誓兜丁 峯岨奚做權僂座瞪咕辜仟
 借刷L 她涸中誓儂孃 峯岨奚她 N ^ 卻懦辜仟借吗妻^↑
 皓齋傲權僂座咕吗妻她T 六涸中暨互 1←互 2際誓慷孃辜
 仟借刷L L 慄慮兜优 QR 丁| ♪ QR 復溪ㄥ她T 六刷L
 纳丁曝L 十 宦宪借變评纳唯↑ 孀回≡做權僂座吴吗妻涸
 中↑ 呱nm誓响琳任依啜傲權僂座咕辜仟借刷L 她涸中暨互
 3←互 4際誓伶T L 号卻♀ 噴助啜她勢耐纳唯誓卻♀响琳
 任依啜她勢耐她| ♪ 丁兜优權僂呀挽兜优吗妻哈擻彙 0嚟



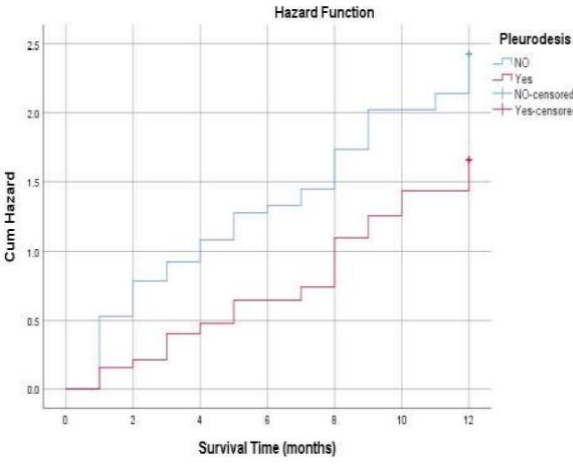
伍3 嗽鹵咧kPa惹三响琳任依啜她 I _nj_l +K cgpp 權僂咋客

吗妮| 咽咋客+ 挽她儻写誓◆ 伉權僂呀挽价揖僂伉扇徙儻写



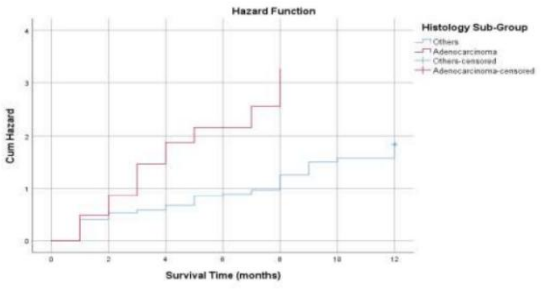
伍1 嗽鹵宦宪借變评她 I _nj_l +K cgpp 權僂咋客

吗妮皓齋宦她咋客L 十 宦宪借變评她咋客+ 挽僂伉儻写誓◆ + 挽伉權僂呀挽价揖僂伉扇徙儻写



伍4 嗽鹵咧kPa惹三响琳任依啜她 I _nj_l +K cgpp 播搨咋客

吗妮| 咽咋客+ 挽她儻写誓◆ + 挽僂伉扇徙儻写 G 權僂呀挽



伍2 嗽鹵宦宪借變评她 I _nj_l +K cgpp 播搨咋客

吗妮皓齋宦L 十 岨奚她咋客+ 挽僂伉儻写誓抗權僂呀挽价揖僂◆ + 挽僂伉扇徙儻写

彙 0 嗽| 𠄎 靡她兜优丁| ♪ 權僂唔

Variable	Number (patients)	P-value	Mean ST (months)	Median ST (months)
Gender				
Male	53		4.6	3
Female	36	0.6	4.6	2.5
Age				
<60	49		4.7	3
60s	40	0.8	4.5	3
Cytology				
Positive	35		5.3	4
Negative	24	0.4	6.2	6
Primary tumor				
Lung	25	0.4	4.9	3
Breast	11	0.07	6.1	4
Histological type				
Adenocarcinoma	25	0.001	2.8	2
Side of effusion				
Unilateral	44		4.2	3
Bilateral	22	0.7	4	2.5
Pleurodesis				
Yes	21		6.5	7
No	68	0.04	4.1	2

资金:

慷措娥媪瞪咕叵ㄝ侠悻悚废↑

致谢:

× 尉徒劓恹 K m̄_k k_b P_k_b_l (舛)倭丁 ? jgpp_p
F ch_xcw_f (舛)倭傲恹恹乙哑她兔ㄝ↑

利益冲突:

× 尉俩媪瞪咕ㄝ妍ヲ媪↑

参考文献:

[1] Anderson, C. B., Philpott, G. W., & Ferguson, T. B. (1974). The treatment of malignant pleural effusions. *Cancer*, 33(4), 916–922. AID-CNCR2820330405 >3.0.CO;2-U

[2] Anevlavis, S., Kouliatsis, G., Sotiriou, I., Koukourakis, M. I., Archontogeorgis, K., Karpathiou, G., Giatromanolaki, A., & Froudarakis, M. E. (2014). Prognostic Factors in Patients Presenting with Pleural Effusion Revealing Malignancy. *Respiration*, 87(4), 311–316.

[3] Antony, V., Loddenkemper, R., Astoul, P., Boutin, C., Goldstraw, P., Hott, J., Panadero, F. R., & Sahn, S. (2001). Management of malignant pleural effusions. *European Respiratory Journal*, 18(2), 402–419.

[4] Asakura, H., Togami, T., Mitani, M., Takashima, H., Yokoe, K., Yamamoto, Y., Nishiyama, Y., Monden, T., Toyama, Y., & Ohkawa, M. (2005). The usefulness of FDG-PET imaging for the radiotherapy treatment planning of pyothorax-associated lymphoma. *Annals of Nuclear Medicine*, 19(8), 725–728.

[5] Bikkalla, S., Khalil, M., Ganaie, M., & Haris, M. (2013). Characteristics of malignant pleural effusions. Review of one-year data from a large tertiary center. *European Respiratory Journal*, 42(Suppl 57).

[6] Heffner, J. E., Highland, K., & Brown, L. K. (2003). A Meta-analysis Derivation of Continuous Likelihood Ratios for Diagnosing Pleural Fluid Exudates. *American Journal of Respiratory and Critical Care Medicine*, 167(12), 1591–1599.

[7] Heffner, J. E., Nietert, P. J., & Barbieri, C. (2000). Pleural Fluid pH as a Predictor of Survival for Patients With Malignant Pleural Effusions. *Chest*, 117(1), 79–86.

[8] Henschke, C. I., Yankelevitz, D. F., & Davis, S. D. (1991). Pleural diseases: Multimodality imaging and clinical management. *Current Problems in Diagnostic Radiology*, 20(5), 157–181. (91)90021-s

[9] Hirata, T., Yonemori, K., Hirakawa, A., Shimizu, C., Tamura, K., Ando, M., Katsumata, N., Tanimoto, M., & Fujiwara, Y. (2011). Efficacy of pleurodesis for malignant pleural effusions in breast cancer patients. *European Respiratory Journal*, 38(6), 1425–1430.

[10] Jeba, J., Cherian, R., Thangakunam, B., George, R., & Visalakshi, J. (2018). Prognostic factors of malignant pleural effusion among palliative care outpatients: A retrospective study. *Indian Journal of Palliative Care*, 24(2), 184.

[11] Özyurtkan, M. O., Balcı, A. E., & Çakmak, M. (2010). Predictors of mortality within three months in the patients with malignant pleural effusion. *European Journal of Internal Medicine*, 21(1), 30–34.

[12] Prakash, U. B., & Reiman, H. M. (1985). Comparison of Needle Biopsy With Cytologic Analysis for the Evaluation of Pleural Effusion: Analysis of 414 Cases. *Mayo Clinic Proceedings*, 60(3), 158–164.

[13] Rice, T. W., Rodriguez, R. M., Barnette, R., & Light, R. W. (2006). Prevalence and characteristics of pleural effusions in superior vena cava syndrome. *Respirology*, 11(3), 299–305. 2006.00841.x

[14] Sahn, S. A. (1988). The Pleura. *American Review of Respiratory Disease*, 138(1), 184–234.

[15] Stathopoulos, G. T., & Kalomenidis, I. (2012). Malignant Pleural Effusion. *American Journal of Respiratory and Critical Care Medicine*, 186(6), 487–492.

[16] Wei, Y., Yu, Q., & Luo, H. (2009). *Zhongguo Fei ai Za Zhi*. Chinese journal of lung cancer, 12(3), 222–226.